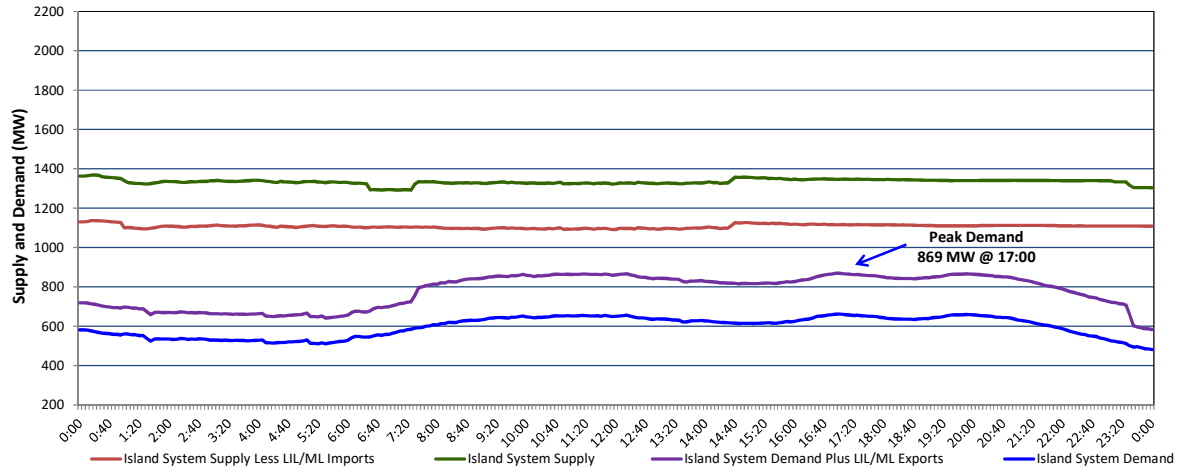


**Newfoundland Labrador Hydro (NLH)  
Supply and Demand Status Report Filed Tuesday, September 20, 2022**

**Section 1  
Island Interconnected System Supply, Demand & Exports  
Actual 24 Hour System Performance For Monday, September 19, 2022**



**Supply Notes For September 19, 2022**

- A As of 0800 hours, June 08, 2022, Holyrood Unit 1 unavailable due to planned outage (170 MW).
- B As of 0800 hours, July 31, 2022, Holyrood Unit 2 unavailable due to planned outage 150 MW (170 MW).
- C As of 1040 hours, August 27, 2022, Holyrood Unit 3 available but not operating (150 MW).
- D As of 1748 hours, September 11, 2022, Cat Arm Unit 2 unavailable due to planned outage (67 MW).
- E As of 0814 hours, September 12, 2022, Cat Arm Unit 1 unavailable due to planned outage (67 MW).
- F As of 0906 hours, September 15, 2022, Hinds Lake Unit unavailable due to planned outage 60 MW (75 MW).
- G As of 1351 hours, September 17, 2022, Upper Salmon Unit available at 65 MW (84 MW).
- H As of 0815 hours, September 18, 2022, Holyrood Gas Turbine unavailable due to planned outage (123.5 MW).

**Section 2  
Island Interconnected Supply and Demand**

Tue, Sep 20, 2022	Island System Outlook <sup>3</sup>	Seven-Day Forecast	Temperature (°C)		Island System Daily Peak Demand (MW)	
			Morning	Evening	Forecast	Adjusted <sup>7</sup>
Available Island System Supply: <sup>5</sup>	1,292 MW	Tuesday, September 20, 2022	10	9	740	740
NLH Island Generation: <sup>4,8</sup>	850 MW	Wednesday, September 21, 2022	10	11	745	745
NLH Island Power Purchases: <sup>6</sup>	70 MW	Thursday, September 22, 2022	14	16	755	755
Other Island Generation:	215 MW	Friday, September 23, 2022	15	17	735	735
ML/LIL Imports:	157 MW	Saturday, September 24, 2022	17	15	725	725
Current St. John's Temperature & Windchill:	8 N/A °C	Sunday, September 25, 2022	13	13	750	750
7-Day Island Peak Demand Forecast:	755 MW	Monday, September 26, 2022	13	14	745	745

**Supply Notes For September 20, 2022**

- Notes:
- Generation outages for running and corrective maintenance are included. These are not unusual for power system operations. They generally do not impact customer supply. The power system operators schedule outages to system equipment whenever possible to coincide with periods when customer demands are low and sufficient supply reserves are available. However, from time to time equipment outages are necessary and reserves may be impacted.
  - Due to the Island system having no synchronous connections to the larger North American grid, when there is a sudden loss of large generating units there may be a requirement for some customer's load to be interrupted for short periods to bring generation output equal to customer demand. This automatic action of power system protection, referred to as under frequency load shedding (UFLS), is necessary to ensure the integrity and reliability of system equipment. Under frequency events have typically occurred 5 to 8 times per year on the Island Interconnected System and the resultant customer load interruptions are generally less than 30 minutes. With the activation of the Maritime Link frequency controller during the winter of 2018, UFLS events have occurred less frequently.
  - As of 0800 Hours.
  - Gross output including station service at Holyrood (24.5 MW) and improved NLH hydraulic output due to water levels (35 MW).
  - Gross output from all Island sources (including Note 4).
  - NLH Island Power Purchases include: CBPP Co-Gen, Nalcor Exploits, Rattle Brook, Star Lake, Wind Generation and capacity assistance (when applicable).
  - Adjusted for curtailable load, market activities and the impact of voltage reduction when applicable.
  - Due to limitations inherent in the design of combustion turbines, the output of combustion turbines may be reduced in the event that ambient temperatures exceed the threshold required for full rated output. This threshold is dependent on the design of each turbine.

**Section 3  
Island Peak Demand Information  
Previous Day Actual Peak and Current Day Forecast Peak**

Mon, Sep 19, 2022	Actual Island Peak Demand <sup>9</sup>	17:00	869 MW
Tue, Sep 20, 2022	Forecast Island Peak Demand		740 MW

- Notes: 9. Island Demand / LIL / ML Exports (where applicable) is supplied by NLH generation and purchases, plus generation owned and operated by Newfoundland Power and Corner Brook Pulp & Paper (Deer Lake Power, DLP).